



8-CHANNEL 3D USB 2.0 EXTERNAL 7.1

SURROUND SOUND BOX WITH DIGITAL OUTPUT



USER MANUAL
USB-SND8

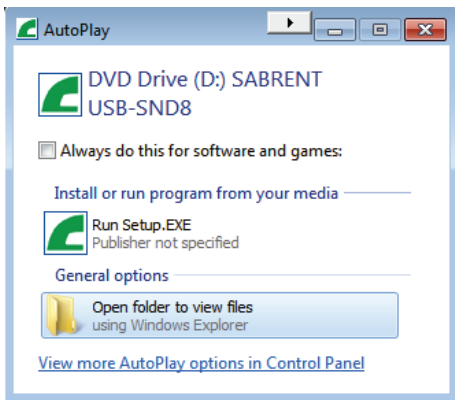
PLEASE NOTE:

You can only achieve multichannel sound with this sound card if the device you wish to use can also support these multichannel sources.

These settings are for a 7.1 surround sound speaker system. Your settings might vary.

DRIVER INSTALLATION FOR WINDOWS VISTA/7/XP:







1. Insert the USB cable from the Sabrent 8 Channel USB Sound Box into an available USB 2.0 port on your computer.
2. Insert the included disc into the CD/DVD drive. You will receive a prompt. Click on Open folder to view files:











***Drivers can be downloaded from www.sabrent.com >> Support >> Drivers >> Scroll down to USB-SND8

SABRENT USB-SND8 USER MANUAL

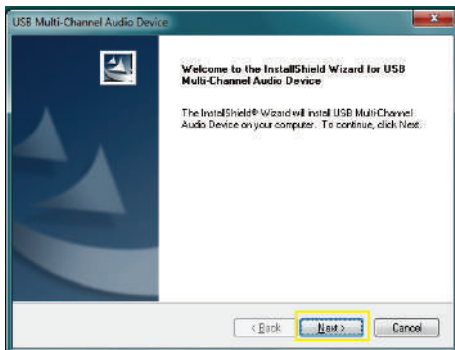
3. A new page will open up and you will be presented with three folders. Double-click the folder for your Operating System:

Name	Date modified
 VISTA	2/22/2011 7:00 PM
 Win7	2/22/2011 7:00 PM
 XP	2/22/2011 7:00 PM
 Setup	7/11/2007 3:49 AM
 v.dll	10/16/2008 1:08 AM
 CmiMergeSetup	7/23/2007 4:43 AM
 Autorun	4/26/2006 7:42 AM
 AUTORUN	6/12/2000 10:59 PM

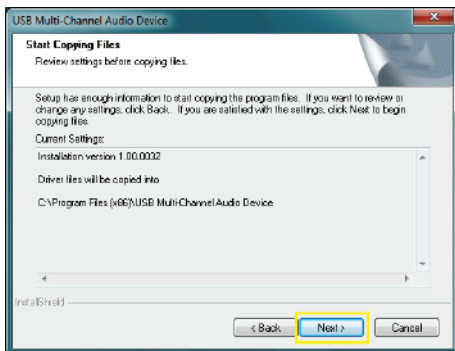
4. Double-click Setup:

 OemIcon	2/22/2011 7:00 PM
 Program	2/22/2011 7:00 PM
 SoftwareDriver	2/22/2011 7:00 PM
 AUTORUN	6/12/2000 10:59 PM
 CmiSetupConfig.dll	11/7/2008 2:31 AM
 CmSetx.dll	4/13/2007 12:29 AM
 CmUtil.dll	10/29/2006 7:46 PM
 Setup	6/26/2008 3:21 AM

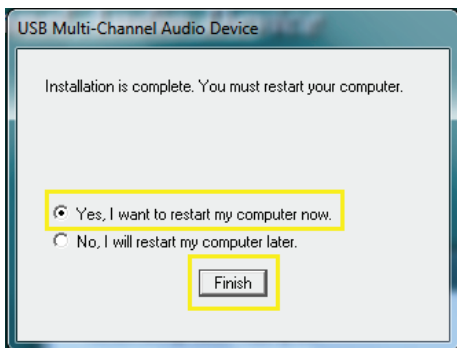
5. Click Next on the prompt:



6. Click Next to begin the driver installation:

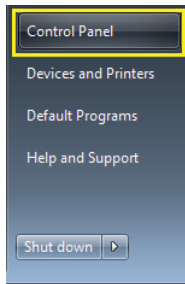


7. Once the software is installed you will be prompted to restart your computer. Select Yes, I want to restart my computer now and click Finish:



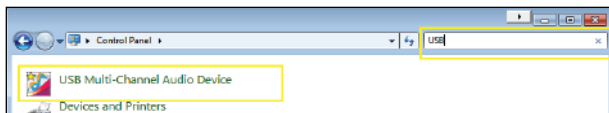
SETTING UP THE SABRENT USB-SND8:

1. After installing the drivers and restarting the computer; click Start and open the Control Panel:



SABRENT USB-SND8 USER MANUAL

2. In the top right search box type “USB”. Then click on USB Multi-Channel Audio Device:

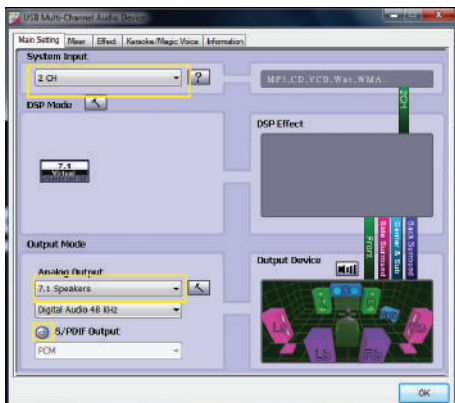


3. You will be directed to the device settings for USB Multi-Channel Audio Device. In the Main Setting tab:

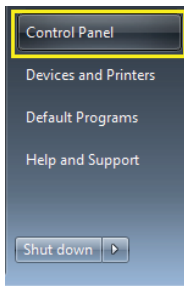
System Input: Select the desired number of channels.

DSP Mode: Leave unchanged.

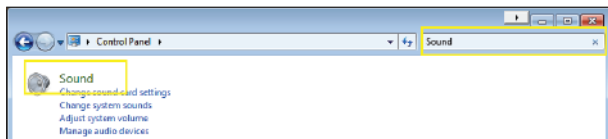
Output Mode: Change the Analog Output to 7.1 Speakers and make sure the S/PDIF Output is grayed out, signaling that it is OFF:



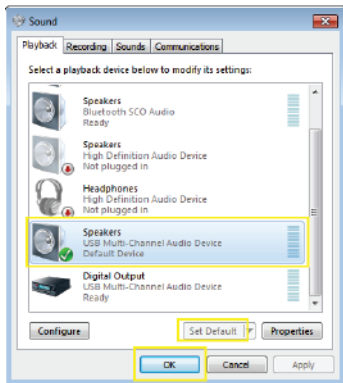
4. Click Start and open the Control Panel:



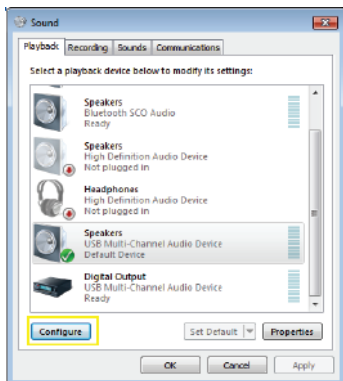
5. In the top right search box type “Sound”. Then click on Sound:



6. Click on USB Multi-Channel Audio Device and click on Set Default:



7. Select Multi-Channel Audio Device and click Configure:



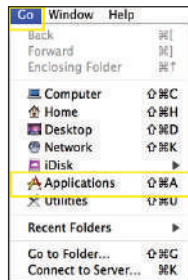
SABRENT USB-SND8 USER MANUAL

DRIVER INSTALLATION FOR MAC OS X:

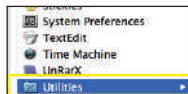
1. Insert the Sabrent USB Sound Box into an available USB port on your computer.
2. Mac OS X will automatically find and install drivers for the Adapter. If OS X prompts you to search for latest drivers online, select OK to complete the driver installation.

SETTING UP THE SABRENT USB-SND8 ON MAC OS X:

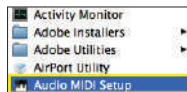
1. Click on the Go button in the menu bar. In the dropdown menu click on Applications:



2. In the Applications folder click on Utilities:

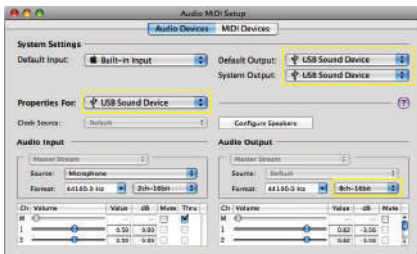


3. Double-click on Audio MIDI Setup:

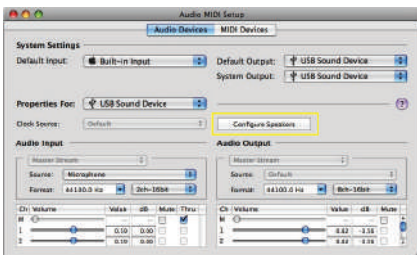


4. You will be presented with the Audio MIDI Setup page. U

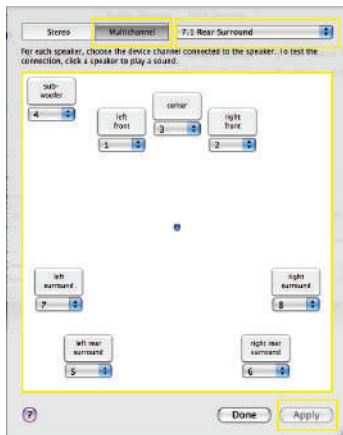
Properties For: Select USB Sound Device; Both Default Output and System Output to USB Sound Device; Audio Output, change the output channels to 8ch-16bit:



5. Click on Configure Speakers:



6. Click on the Multichannel tab. Change the speaker setup to 7.1 Rear Surround. Setup the speakers as follows:



7. Click Apply to finalize the settings.

CONNECTING THE SABRENT USB-SND8 TO SPEAKERS:

1. When using the Sabrent USB-SND8 with surround sound computer speakers please refer to the wiring table.

- | | | |
|------------|---|-------------------------------------|
| 1. F-OUT | = | Front Left and Front Right Speakers |
| 2. SS-OUT | = | Left and Right Speakers |
| 3. BS-OUT | = | Back Left and Back Right Speakers |
| 4. C/B-OUT | = | Middle Speaker and Subwoofer |

2. You may use any combination of speakers, up to 7.1. You may also use S/PDIF Out and S/PDIF In. You must adjust the software accordingly for proper function.

SABRENT USB-SND8 USER MANUAL

