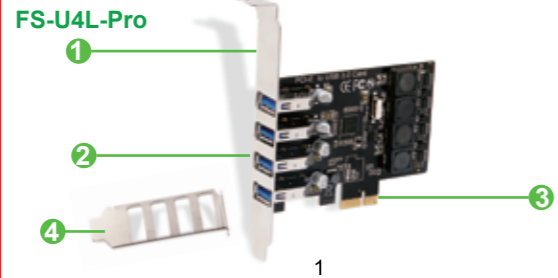
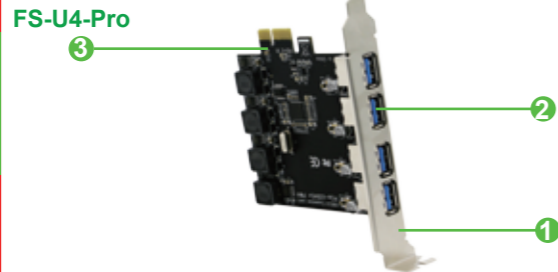
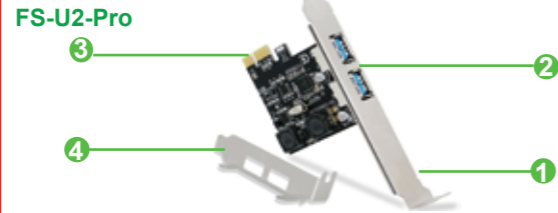




PCI Express USB 3.0 Expansion Card

Model: • FS-U2-Pro • FS-U4-Pro • FS-U4L-Pro
 Site:www.febsmart.com Email:support@febsmart.com



- 1 Standard Size Bracket
- 2 USB 3.0 Interface
- 3 PCI Express X1 Interface
- 4 Low profile bracket

Product Description:

FS-U2-Pro provide 2 USB 3.0 ports for USB device on desktop computers.Allow conected device get 5Gbps data speed in total.Build in FebSmart Self-Powered Technology for high-power consuming device such as HDD,SSD or industrial level equipments.Low profile and standard size bracket inside for both standard size and slim PCs. PCIE2.0 X1 interface design will works on PCIE X1,X2,X4,X8,X16 slot.

FS-U4-Pro allow users add 4 USB 3.0 ports on desktop computers.Provide a 5Gbps total bandwidth for USB 3.0 device.Build in FebSmart Self-Powered Technology for high power consuming device such as HDD,SSD or industrial level equipments.PCIE 2.0 X1 design will works on PCIE X1,X2, X4,X8,X16 slot.Full size bracket mounted on USB card,do not support slim PCs.

FS-U4L-Pro provide 4 USB 3.0 ports for USB device on desktop computers.Allow conected device get 5Gbps data speed in total. Build in FebSmart Self-Powered Technology for high power consuming device such as HDD,SSD or industrial equipments.Low profile and standard size bracket inside for both standard size and slim PCs.PCIE 2.0 X1 interface design will works on PCIE X1,X2,X4,X8,X16 slot.

System Requirements:

Driver free on Windows 10,8.1,8(32/64bit) systems.Need to Install driver on Windows Server,XP,7,Vista(32/64bit)system.

FebSmart Self-Powered Technology:

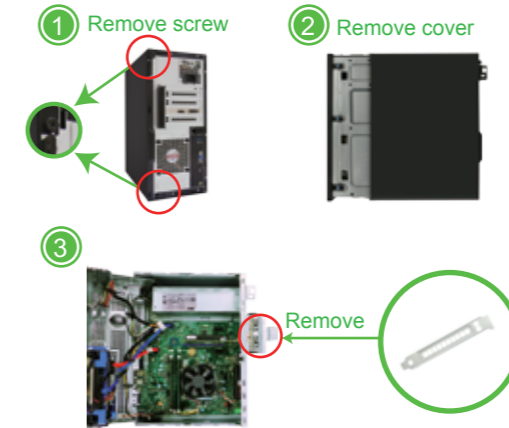
FebSmart Self-Powered Technology is a new solution to add more power supply on USB expansion cards.The old version PCI Express USB cards need to plug a power cable from desktop computers power control center.PCI express slot can provide 75W max almost 12V/6.25A power in total.We add a voltage transformer on each USB 3.0 port transfer 12V to 5V and provide each USB Port 2 Ampere max power supply. In other words each USB 3.0 port will get 5V/2A for connected USB 3.0 devices.Most of high power-consuming devices just need 4~8W which means this USB expansion card can be running few the high power-consuming device simultaneously in high speed.To protect data device and users data we build safety electric circuit protector on each USB 3.0 port.Do not worry about data loss,burn storage device.Add super safe and easy install USB 3.0 card on desktop computers and connect more USB device.

Package List:

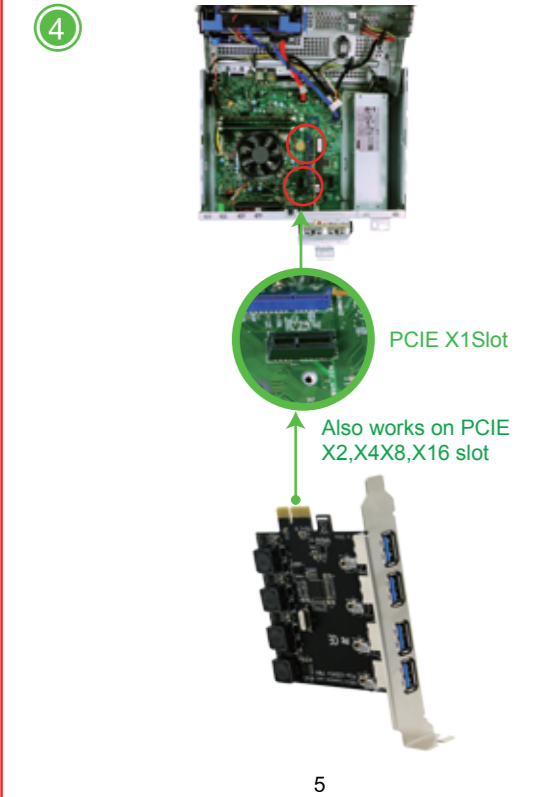
FS-U2-Pro	FS-U4-Pro	FS-U4L-Pro
1XFS-U2-Pro	1XFS-U4-Pro	1XFS-U4L-Pro
1XUser Manual	1XUser Manual	1XUser Manual
1XMini CD	1XMini CD	1XMini CD
1XLow Profile Bracket	3	1XLow Profile Bracket

Add USB Card on Desktop PCs:

Step1,Switch OFF PC,unplug computer from main socket,unplug power cord and other connected peripherals.Remove the cover from computer case.



Step2,Find correct PCI Express slot from motherboard, insert USB 3.0 card into an empty PCI-E slot.



Step3,Reattach the computer cover,and put back removed peripherals,power on desktop computer.

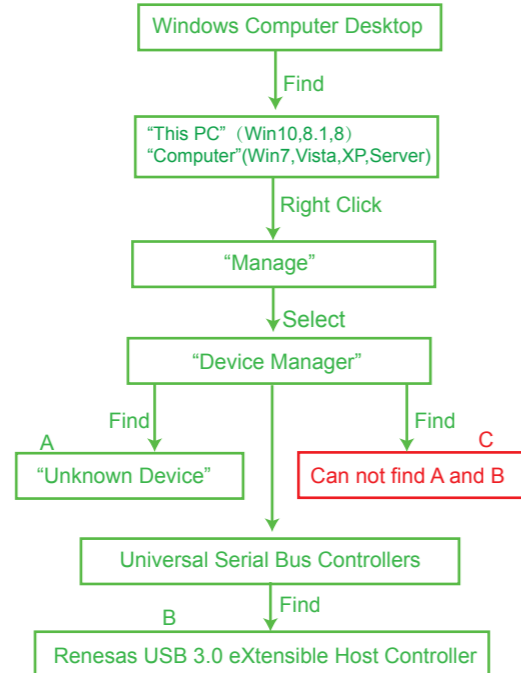


Added on USB Ports

Check if USB Card Works on Computers:

1.Users can plug universal USB device such as USB flash drives,keyboards,mouse etc.Check if computer can find these device.If system read USB device means no need to install driver,can use these added on USB 3.0 ports now.

2.Find this added on USB card hardwae in Windows system "Device Manager" and check if system read it.



A,Means PCs find hardware correctly need to install driver.
 B,Means USB card hardware correctly placed and system load driver already can use it now.
 C,Means PCs can not find the added on USB card and not load driver for USB card.Users need to re-plug USB card on motherboard PCIE slot,and better change to an active PCIE slot for USB card.

Install Driver on Desktop PCs:

- FS-U2-Pro,FS-U4-Pro and FS-U4L-Pro are based on Renesas USB 3.0 host controller serial.These models share same installation steps on Windows 10,8.1,8,7,XP and Windows Server (32/64bit).
- Most of Windows 10,8.1,8(32/64bit) and Windows server 2012,2012R2,2016,2019 system will load driver automatically. If it can not read on your system and read "Unknown Device" in Windows "Device Manager",no worry just install driver.
- Most of Windows XP,Vista,7(32/64bit) and Windows server 2003,2003R2,2008,2008R2(32/64bit) system will read as "Unknown Device" in "Device Manager",install driver please it will works then.

Step1,Open Mini CD find file folder"Renesas" find "USB Card .exe" or download driver from our site www.febsmart.com



Step2,Complete driver installation.

- Double right-click"USB Card"

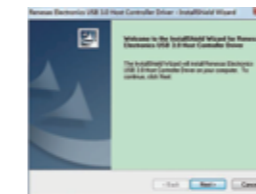


USB Card

- Waiting files ready to install.



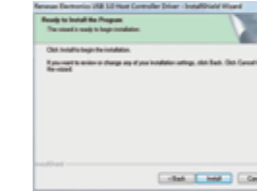
- Click "Next"



- Accept the license,click"Next"



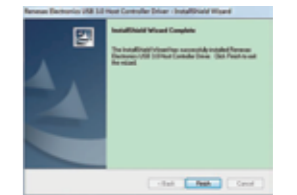
- Click "install"



- Waiting for driver installation.



- Click "Finish",and start using the new USB ports.



User FAQ:

- How many USB device will be lighted up simultaneously?
 Actually with FebSmart Self-Powered technology users can run high power consumption device in all USB ports no issues.
- Why my USB hard drive and flash drives transfer data at a low speed than official speed?
 1.If USB flash drives is USB 2.0 device,will runs in 2.0 speed. Make sure it is a USB 3.0 device will pick a USB 3.0 speed.
 2.USB external Hard Disks are in different speed between SSD and HDD. SSD transfers much faster than HDD.
 3.Is this USB ports still support external USB HUBs or other extension device?
 Yes,this is a Host Controller USB extensible card,will allow connect to extension USB device.
- Where I can get tech support,driver download and warranty?
 Contact Us:support@febsmart.com
 Driver Download:www.febsmart.com